



Request for Proposals

**Public Art Piece for the Eastside Neighborhood,
Syracuse, NY**

Issued by:

**Eastside Tomorrow's Neighborhoods Today (TNT) Planning
Council**

Deadline: Monday, April 19, 2010

For more information:

Kate Auwaerter, City of Syracuse Public Art Coordinator
315-448-8108

kauwaerter@edsyracuse.com

I. RFP Project Summary

The Eastside Tomorrow's Neighborhoods Today (TNT) Planning Council and the Syracuse Public Art Commission seek to commission a sculpture to be located at one of two potential locations within the Eastside neighborhood of Syracuse, NY. The total project budget is \$6,000 for design, fabrication and installation. The piece will become part of the City of Syracuse's permanent art collection. Two locations have been designated as possible sites; artists may apply for one or both sites. The Eastside TNT Public Art Committee will determine the final site and administer the selection and installation process.

II. Project Background

The Syracuse Public Art Commission (SPAC) has developed a matching grant program in support of the creation and installation of works of art designed specifically for the city's distinct neighborhoods, and the Downtown and Lakefront areas. Representing the residents and businesses of the Eastside, the Eastside TNT has partnered with SPAC to commission and install a new piece of public art that will speak to the unique qualities of the neighborhood.

III. Project Description

A) Overview

The Eastside TNT mission statement states:

The Eastside celebrates the diversity and multi-cultural differences each person has to offer. We are dedicated to providing quality education, building economic opportunity and development, ensuring beautiful and safe neighborhoods and establishing a balance with nature and the environment.

This mission statement captures the mindset of the Eastside, an area that includes Syracuse University, Lemoyne College and SUNY College of Environmental Sciences & Forestry, the Westcott neighborhood (often referred to as the "Westcott Nation"), the Salt Springs neighborhood, and the Near Eastside and Outer Comstock neighborhoods. The Eastside has a tradition of using public art to express and celebrate its diversity. From colorful murals to painted fire hydrants, you know you know when you are in the Eastside.

Two sites have been identified for this public art project, both of which are prominent locations within the Eastside. The first is Loguen Park, a symbolically rich city park located at the corner of E. Genesee Street, Lexington Avenue and Columbus Avenue. The park is named after Jermain Loguen and his family. Called the "king" or "prince" of the Underground Railroad, Rev. Loguen was born in slavery in Tennessee. He escaped in 1834 and went to St. Catharine's, Canada. Educated at Oneida Institute in Whitesboro, New York, he married Caroline Storum (born free in Chautauqua County, New York) in 1840, and arrived in Syracuse in 1841. He became pastor (and later bishop) of the African Methodist Episcopal Zion Church, as well as a teacher, abolitionist lecturer, and Underground Railroad agent. The Loguens lived in a house at the corner of East Genesee and Pine streets, approximately two city blocks from the park. The Loguen's daughter, Amelia, married Frederick Douglass's son, Lewis, in the house on East Genesee Street in 1869. Daughter Sarah Loguen, graduated from University Medical Center College in Syracuse, and became one of the country's earliest woman doctors, practicing in Santo Domingo before returning to settle on Westcott Street in Syracuse. Their son, Gerrit Smith Loguen, graduated from Syracuse University as an artist. The city park at Lexington and E. Genesee was dedicated to the Loguen Family in 2008. The sculptural piece selected for this location will creatively memorialize this family that was so important to the history of the African American community and the abolitionist movement in Syracuse.

The second site is located at the Westcott Community Center (WCC) at the intersection of Euclid Avenue and Westcott Street. A landmark for the Eastside, the WCC sits at the intersection of the University and the Westcott neighborhoods and is an ambassador for the entire area. The WCC has wide-ranging programming that includes art, music, culture, craft civic discourse and debate, reaching people of all ages and interests. A typical day at the WCC includes a senior lunch, followed by after-school programming for school-age children, followed by an evening concert that appeals to high-school or college-age folks, or a lecture by a prominent local speaker. The work selected will be an expression of the community that the WCC serves: it should be dynamic, interactive and touchable.

B) Specifications

Artwork should be designed specifically for the selected site and respond to the unique character of its surroundings. In addition, the artwork must meet the following specifications:

- 1) safe, tamper resistant and easily maintained,
- 2) constructed of permanent materials that can withstand all weather conditions.

C) Siting (Please see the attached images)

Loguen Park: Loguen Park is a large triangular park at the intersection of three busy streets. Sidewalks surround the park. The park is a grassy space dotted by large trees. A playground is located at roughly the center of the park. The Friends of Loguen Park have developed a Master Plan (see attached image) for the park which outlines the plans for future development, including a senior's corner which is still in the planning stages. No specific area of the park has been identified for public art, however, there are numerous opportunities for creativity. For example, a potential site is the point of the park at East Genesee and Cherry streets is the closest part of the park to the site where the Loguen's house once stood. (The Loguen house was demolished for a Rite Aid in the 1990s.) Another location could be the fountain basin, which has not functioned for many years and, given the cost, is unlikely to be restored.

Westcott Community Center: The Westcott Community is at the intersection of Euclid Avenue and Westcott Street. The WCC is a former fire house that has been converted to its present use. There are parking lots on both the Euclid Avenue and Westcott Street sides of the building. Locations around the center for artwork include a square grassy area surrounded by a low wooden fence located at the corner of the building facing the intersection. There is also a side yard visible from Euclid Avenue, which could also be considered for artwork.

IV. Selection Process

The selection will be made by the Eastside TNT Public Art Committee. The committee will review all submissions. Because this artwork will also be subject to the approval of the Syracuse Public Art Commission (SPAC), the committee will use the criteria set by the SPAC to evaluate and select artwork. The criteria are enumerated below:

- Artistic merit and quality, as substantiated by an artist's past history of exhibitions or sales, awards or other recognition, or an outstanding first work, as well as the inherent quality in terms of timelessness of vision, design, aesthetics and excellence;
- Intentionality of the artist, concerning the meaning and proposed or desired effect of the work as Public Art upon the viewing public, as rationalized and elaborated upon in the project description;
- Local significance, creating a sense of excitement in public spaces and presenting fresh ways of seeing the community and city reflected;

- Representation of styles and tastes within the public art collection, acknowledging existing works in the public art collection and striving for diversity of style, scale and media;
- Safety and durability, including the ability of the artwork to withstand weather conditions, as well as structural and surface integrity;
- Unrestricted public viewing, primarily the opportunity for public access, but also suitability for public participation, social and political attitudes, and functional considerations; and
- Installation and maintenance of the work, from practicality of fabrication and transport, to installation and long-term care.

V. Projected Timeline

- April 19, 2010: RFP deadline
- May 11, 2010: Eastside TNT selection
- June 8, 2010: Syracuse Public Art Commission approval
- June 21, 2010: Common Council approval
- June- August 2010: Contract and commencement of work
- September 2010: Installation and dedication

VI. Application Requirements

Deadline for submission: Monday, April 19, 2010

A) Delivery:

Mail or hand-deliver applications to:

Kate Auwaerter, City of Syracuse Public Art Coordinator
318 City Hall
Syracuse, NY 13202

B) Application:

To be reviewed for consideration, the application must contain:

- Project description, including purpose, rationale and/or intention, including how the piece responds to the site selected and to the Eastside;
- Artist resume, exhibition list, and CD Rom and/or hard copy color images of other works
- Illustrative drawings, model and/or maquette showing artwork in relation to proposed site
- Illustrative and/or construction drawings of proposed work
- Description of short- and long-term maintenance requirements and costs
- Detailed project budget

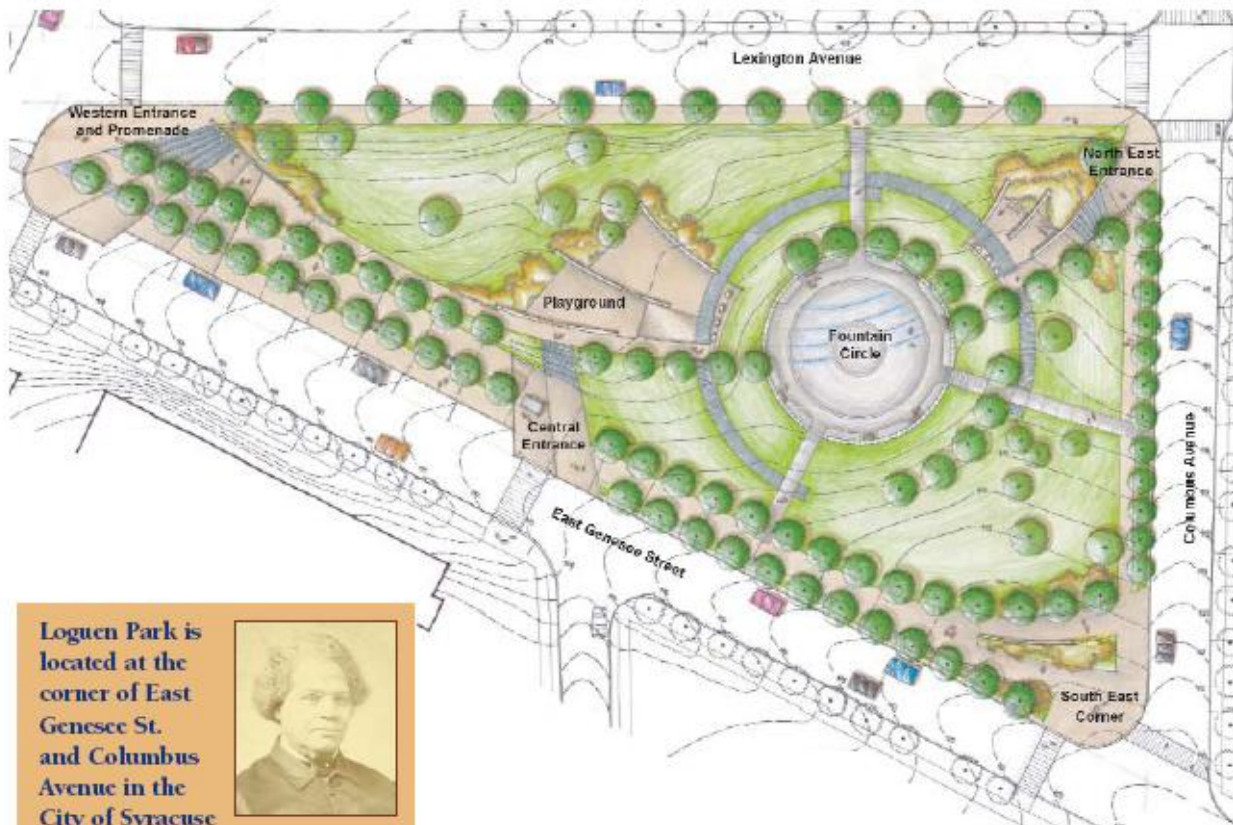
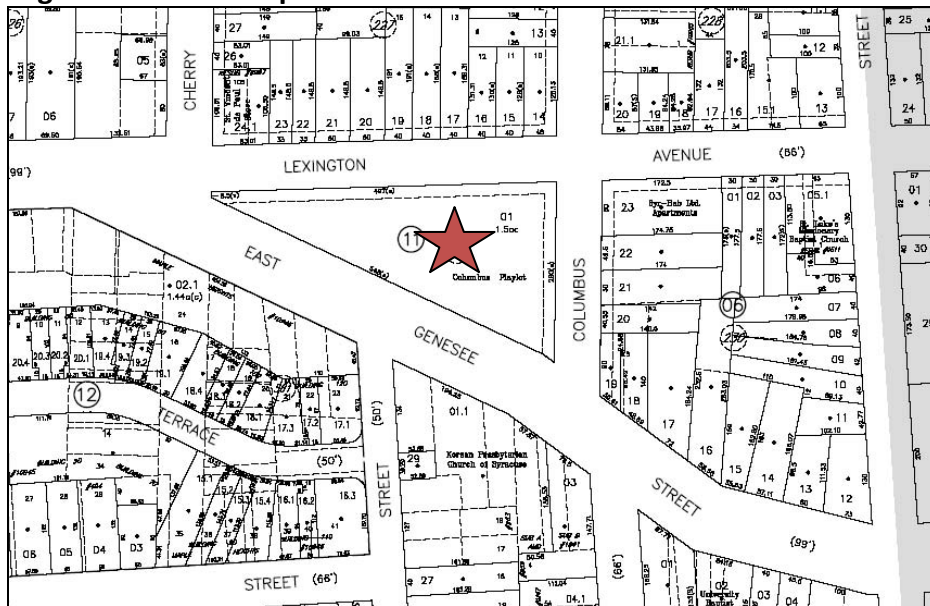
VII. Project Contact

Kate Auwaerter
City of Syracuse Public Art Coordinator
315-448-8108 or kauwaerter@ci.syracuse.ny.us

VIII. Supporting Materials

- 1) Photographs of sites
- 2) Site plans
- 3) Loguen Park Master Plan
- 4) <http://www.westcottcc.org>
- 5) http://www.syracuse.ny.us/Home_Westcott.aspx

Loguen Park Site Map



Loguen Park is located at the corner of East Genesee St. and Columbus Avenue in the City of Syracuse



Master plan for Loguen Park prepared by SUNY ESF Faculty of Landscape Architecture students, 2006.

Loguen Park Site Photographs



View of fountain circle, View SW



View of fountain circle, View NE

Loguen Park Site Photographs

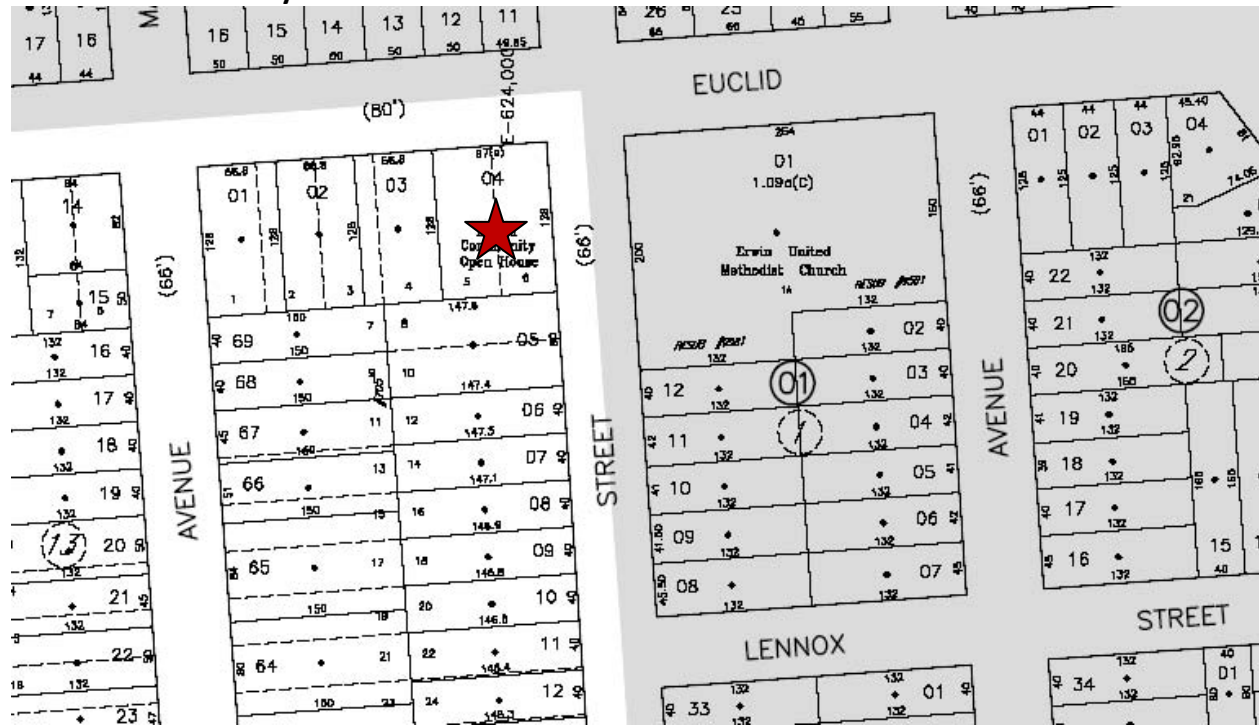


View of triangular tip of park, View W



View of triangular tip of park, View E

Westcott Community Center Site



Westcott Community Center Site Photographs



Westcott Community Center, View SW

Westcott Community Center Photographs



Corner greenspace, View N



Sideyard of Westcott Community Center from sidewalk, View S